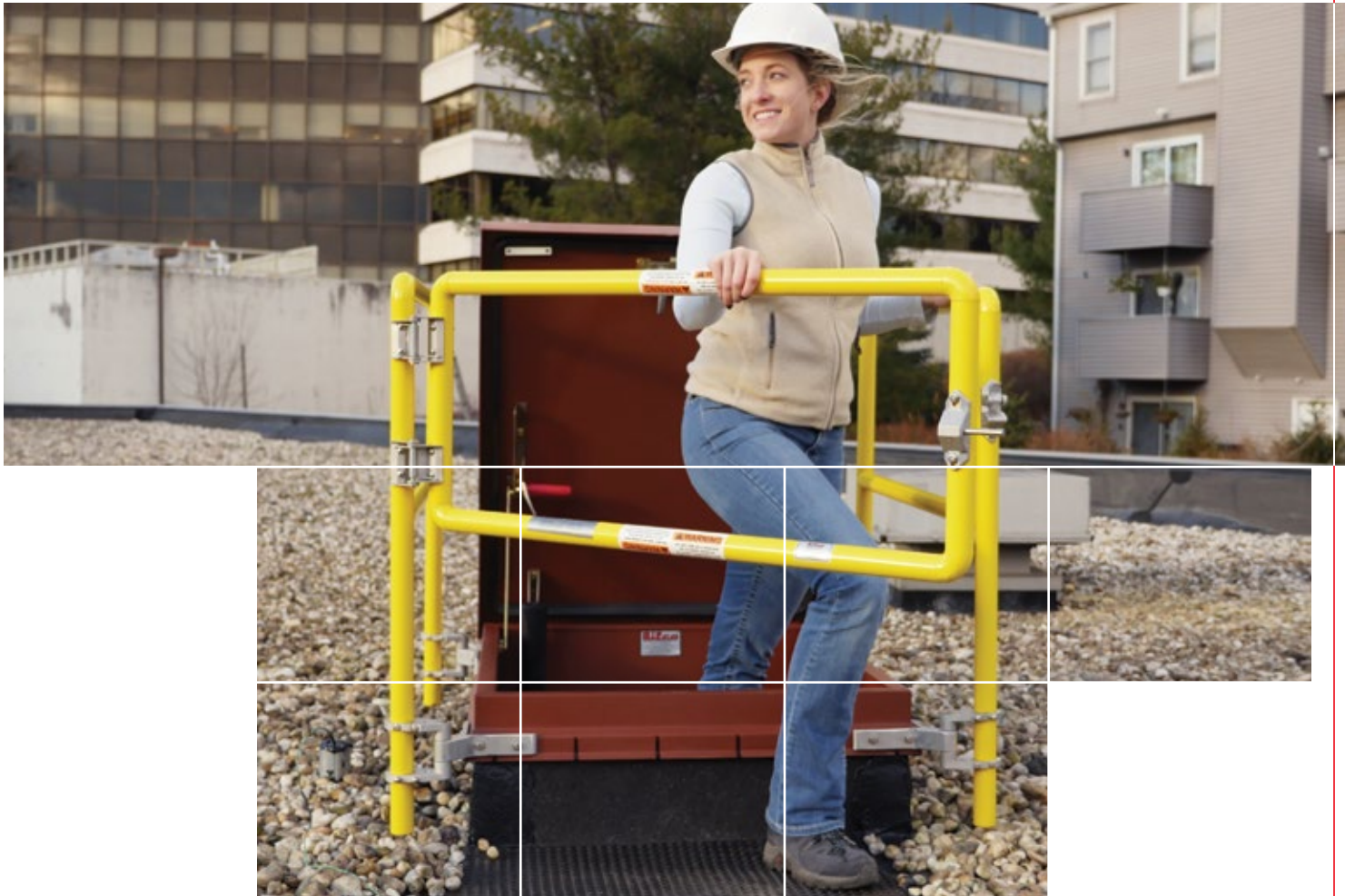


# Experience. Innovation.

Commercial Products



- > Roof Hatches
- > Automatic Smoke Vents
- > Floor Access Doors



800.366.6530  
WWW.BILCO.COM

# Introduction



Headquarters – New Haven, Connecticut



Manufacturing – Trumann, Arkansas



## BILCO's History

The BILCO Company has served the building industry since 1926. During these years it has built a reputation among architects, engineers, specifiers, and the construction trades for dependability and for products that are unequalled in design and workmanship.



BILCO, a wholly owned subsidiary of AmesburyTruth which is a division of Tyman PLC, has been a pioneer in the development of the unique line of specialty access products found within this catalog.

## BILCO Today

The BILCO Company continues to be the industry leader in the design and manufacture of specialty access products. In order to better serve its customers, BILCO has added manufacturing facilities and strategic distribution throughout the world, along with establishing an extensive international network of factory-trained representatives. These representatives, combined with BILCO's highly skilled and dedicated personnel, ensure a level of customer service that is unequalled in the industry. As the leader in design innovation, many of BILCO's products incorporate features for which numerous U.S. and international patents have been issued. Years of engineering experience, coupled with manufacturing facilities utilizing the most modern equipment available, allows BILCO to design and fabricate access products for virtually every application.

## Our Commitment

BILCO products are designed and fabricated to consistently high quality standards to ensure complete customer satisfaction. As part of its commitment, BILCO has implemented a quality system, which has achieved ISO 9001 certification. The BILCO Company is committed to producing access products that are unequalled in quality, design and workmanship.



## Our Guarantee

BILCO warrants its products against defects in material and workmanship for a period of five years from the date of purchase, unless otherwise indicated in this catalog. Should a part fail to function in normal use within this period, BILCO shall furnish a new part at no charge. Electric motors, special finishes and other special equipment (if applicable) shall be warranted separately by the manufacturers of those products.

## The BILCO Company

P.O. Box 1203, New Haven, CT 06505 • Phone: (800) 366-6530 • Fax (203) 535-1582 • e-mail: commercial@bilco.com  
Web: www.BILCO.com

Visit [www.bilco.com](http://www.bilco.com) to find a BILCO sales representative near you.

The BILCO Company reserves the right to make design changes or to withdraw designs and products shown throughout this catalog without notice as we deem advisable.

©2018 The BILCO Company, New Haven, Connecticut 06505

Log on to [www.BILCO.com](http://www.BILCO.com) to find a sales representative near you.



# Index



## Roof Access Hatches

Ladder Access . . . . .	.4
Ship Stair . . . . .	.6
Service Stair . . . . .	.8
Equipment Access . . . . .	.10
Specialty Hatches . . . . .	.12
Safety Products . . . . .	.14

## Automatic Smoke Vents

Double Leaf . . . . .	.16
Daylighting . . . . .	.18
Acoustical . . . . .	.20
Roofing Product Options . . . . .	.22



## Floor Access Doors

Channel Frame Drainage . . . . .	.24
Vehicular Loading . . . . .	.26
Angle Frame . . . . .	.28
Finished Flooring . . . . .	.30
Special Application Doors . . . . .	32-35
Safety Products . . . . .	.36
Floor Door Options . . . . .	.38
Additional BILCO Products . . . . .	.39



*Product details and specifications are readily available by visiting our download center on [www.BILCO.com](http://www.BILCO.com).*



### U.S. and International BILCO patents issued...

5,373,665	5,565,274	5,960,596	6,260,305	6,672,020	10,000,944
5,554,433	5,927,012	6,041,553	6,347,818	6,931,793	

*Other U.S. and International patents issued and pending.*



# Roof Access Hatches

## Ladder Access

The easy one-hand-only operation to the fully opened or closed position provides the user the security of having the other hand firmly on the ladder at all times. Available in galvanized steel, aluminum or stainless steel construction.



### Benefits

- Easy, one-hand operation
- Weathertight performance
- Energy efficient
- Installs quickly and easily
- Convenient and secure access to roof areas
- Durable construction
- Custom sizes and options readily available

### Features

- Engineered lift assistance
- Heavy-gauge construction
- Positive slam latch with interior and exterior padlock hasps
- Fully insulated and gasketed
- Corrosion resistant hardware
- Bilclip® Flashing System for ease of installation on single-ply roofing
- Available with Miami-Dade County and Florida Product Approval
- Pre-punched capflashing to receive the Bil-Guard® 2.0 Hatch Safety Railing System (see pages 14-15 for more information)

Contact us by phone: 800.366.6530 or email: [commercial@BILCO.com](mailto:commercial@BILCO.com)

Log on to [www.BILCO.com](http://www.BILCO.com) to find a sales representative near you.

### Product Options

BILCO ladder access roof hatches are available in galvanized steel, aluminum, stainless steel and copper construction to meet any job requirements. Aluminum products are also available in a thermally broken design that offers superior energy efficiency and resists condensation.

#### Material

- Steel: 14 gauge (1.9mm) G-90 paint bond galvanized
- Aluminum: 11 gauge (2.3mm)
- Stainless Steel: 14 gauge (1.9mm) Type 304 stainless

#### Insulation

- 1" (25mm) fiberglass insulation in cover and 1" fiberboard insulation in curb
- 3" (75mm) Polyisocyanurate (R = 20.3) in cover and curb (Thermally Broken Models)

#### Finish

- Steel: Alkyd base red oxide primer
- Aluminum: Mil finish
- Stainless Steel: Bead blast finish
- See page 22 for custom finish options

#### Hardware

- Zinc plated/chromate sealed, engineered composite compression spring tubes
- Type 316 stainless steel

### Specialty Roof Hatches *(see pages 12-13 for more information)*

- Daylighting with polycarbonate skylight
- Retrofit mounting
- Security Series

See pages 22-23 for a complete list of curb, finish and other special options.



Type S-20 and S-50 Only



Type S  
Type E



Type S-TB  
Type E-TB  
Thermally Broken  
R-20+ Insulation

TYPE	INCHES	MM	MATERIAL	INSULATION	THERMALLY BROKEN
S-20	36 x 30	914 x 762	Steel	1" (25mm)	No
S-50	36 x 30	914 x 762	Aluminum	1" (25mm)	No
S-50-TB	36 x 30	914 x 762	Aluminum	3" (75mm)	Yes
S-90	36 x 30	914 x 762	Stainless Steel	1" (25mm)	No
E-20	36 x 36	914 x 914	Steel	1" (25mm)	No
E-50	36 x 36	914 x 914	Aluminum	1" (25mm)	No
E-50-TB	36 x 36	914 x 914	Aluminum	3" (75mm)	Yes
E-90	36 x 36	914 x 914	Stainless Steel	1" (25mm)	No

Type S-40 and E-40 models are available in steel curb and aluminum cover  
Type S-70 and Type E-70 are also available in copper construction



# Roof Access Hatches

## Ship or Steep Stair Access

BILCO Ship Stair access hatches are ideal for installations where frequent use may be expected. Permits easier movement of maintenance personnel, tools, and equipment. Available in galvanized steel, aluminum or stainless steel construction.



### Benefits

- Easy, one-hand operation
- Weathertight performance
- Energy efficient
- Installs quickly and easily
- Convenient and secure access to roof areas
- Durable construction
- Custom sizes and options readily available

### Features

- Engineered lift assistance
- Heavy-gauge construction
- Positive slam latch with interior and exterior padlock hasps
- Fully insulated and gasketed
- Corrosion resistant hardware
- Bilclip® Flashing System for ease of installation on single-ply roofing
- Available with Miami-Dade County and Florida Product Approval
- Pre-punched capflashing to receive the Bil-Guard® 2.0 Hatch Safety Railing System (see pages 14-15 for more information)



Contact us by phone: 800.366.6530 or email: [commercial@BILCO.com](mailto:commercial@BILCO.com)

Log on to [www.BILCO.com](http://www.BILCO.com) to find a sales representative near you.



Type NB  
Type NB-HZ



Type NB-TB  
Thermally Broken  
R-20+ Insulation

### Product Options

BILCO Ship Stair access roof hatches are available in galvanized steel, aluminum, stainless steel and copper construction to meet any job requirements.

#### Material

- Steel: 14 gauge (1.9mm) G-90 paint bond galvanized
- Aluminum: 11 gauge (2.3mm)
- Stainless Steel: 14 gauge (1.9mm) Type 304 stainless

#### Insulation

- 1" (25mm) fiberglass insulation in cover and 1" fiberboard insulation in curb
- 3" (75mm) Polyisocyanurate (R = 20.3) in cover and curb (Thermally Broken Models)

#### Finish

- Steel: Alkyd base red oxide primer
- Aluminum: Mil finish
- Stainless Steel: Bead blast finish
- See page 22 for custom finish options

#### Hardware

- Zinc plated/chromate sealed, engineered composite compression spring tubes
- Type 316 stainless steel

### Specialty Roof Hatches *(see pages 12-13 for more information)*

- Daylighting with polycarbonate skylight
- Retrofit mounting
- Security Series

*See pages 22-23 for a complete list of curb, finish and other special options.*



Type NB-20HZ and NB-50HZ only

TYPE	INCHES	MM	CURB MATERIAL	COVER MATERIAL	INSULATION	THERMALLY BROKEN
NB-20	30 x 54	762 x 1372	Steel	Steel	1" (25mm)	No
NB-20HZ	30 x 54	762 x 1372	Steel	Steel	1" (25mm)	No
NB-50	30 x 54	762 x 1372	Aluminum	Aluminum	1" (25mm)	No
NB-50-TB	30 x 54	762 x 1372	Aluminum	Aluminum	3" (75mm)	Yes
NB-50HZ	30 x 54	762 x 1372	Aluminum	Aluminum	1" (25mm)	No
NB-90	30 x 54	762 x 1372	Stainless Steel	Stainless Steel	1" (25mm)	No

*Type NB-40 models are available in steel curb and aluminum cover*

CAD details, BIM models, 3-part specifications available on [www.BILCO.com](http://www.BILCO.com)



# Roof Access Hatches

## Service or Full Stair Access

BILCO Service Stair access hatches are ideal for installations where frequent use may be expected. Permits easier movement of maintenance personnel, tools, and equipment. Available in galvanized steel, aluminum or stainless steel construction.



### Benefits

- Easy, one-hand operation
- Weathertight performance
- Energy efficient
- Installs quickly and easily
- Convenient and secure access to roof areas
- Durable construction
- Custom sizes and options readily available

### Features

- Engineered lift assistance
- Heavy-gauge construction
- Positive slam latch with interior and exterior padlock hasps
- Fully insulated and gasketed
- Corrosion resistant hardware
- Bilclip® Flashing System for ease of installation on single-ply roofing
- Pre-punched capflashing to receive the Bil-Guard® 2.0 Hatch Safety Railing System (see pages 14-15 for more information)

Contact us by phone: 800.366.6530 or email: [commercial@BILCO.com](mailto:commercial@BILCO.com)



Log on to [www.BILCO.com](http://www.BILCO.com) to find a sales representative near you.



Type L



Type L-TB  
Thermally Broken  
R-20+ Insulation

### Product Options

BILCO Service Stair access roof hatches are available in galvanized steel, aluminum, stainless steel and copper construction to meet any job requirements.

#### Material

- Steel: 14 gauge (1.9mm) G-90 paint bond galvanized
- Aluminum: 11 gauge (2.3mm)
- Stainless Steel: 14 gauge (1.9mm) Type 304 stainless

#### Insulation

- 1" (25mm) fiberglass insulation in cover and 1" fiberboard insulation in curb
- 3" (75mm) Polyisocyanurate (R = 20.3) in cover and curb (Thermally Broken Models)

#### Finish

- Steel: Alkyd base red oxide primer
- Aluminum: Mil finish
- Stainless Steel: Bead blast finish
- See page 22 for custom finish options

#### Hardware

- Zinc plated/chromate sealed, engineered composite compression spring tubes
- Type 316 stainless steel

### Specialty Roof Hatches *(see pages 12-13 for more information)*

- Daylighting with polycarbonate skylight
- Retrofit mounting
- Security Series

*See pages 22-23 for a complete list of curb, finish and other special options.*

TYPE	INCHES	MM	MATERIAL	INSULATION	THERMALLY BROKEN
L-20	30 x 96	762 x 2438	Steel	1" (25mm)	No
L-50	30 x 96	762 x 2438	Aluminum	1" (25mm)	No
L-50-TB	30 x 96	762 x 2438	Aluminum	3" (75mm)	Yes
L-90	30 x 96	762 x 2438	Stainless Steel	1" (25mm)	No

*Type L-40 models are available in steel curb and aluminum cover*

# Roof Access Hatches

## Equipment Access

Larger openings provide an easily accessible means for equipment to be installed or removed from a building. Equipment access roof hatches are available in steel, aluminum and stainless steel construction and in one standard single leaf size [Type F, 48" x 48" (1219mm x 1219mm)]. Special single leaf sizes (Type SS) are available and are recommended for widths up to 5'0" (1524mm). For larger openings, specify double leaf construction (Type D). For best operation, specify aluminum construction for single leaf hatches over 3'0" (914mm) wide and double leaf hatches over 7'0" (2134mm) in width.



### Benefits

- Easy, one-hand operation
- Weathertight performance
- Energy efficient
- Installs quickly and easily
- Convenient and secure access to roof areas
- Durable construction
- Custom sizes and options readily available

### Features

- Engineered lift assistance
- Heavy-gauge construction
- Positive slam latch with interior and exterior padlock hasps
- Fully insulated and gasketed
- Corrosion resistant hardware
- Bilclip® Flashing System for ease of installation on single-ply roofing
- Pre-punched capflashing to receive the Bil-Guard® 2.0 Hatch Safety Railing System (see pages 14-15 for more information)

Contact us by phone: 800.366.6530 or email: [commercial@BILCO.com](mailto:commercial@BILCO.com)

Log on to [www.BILCO.com](http://www.BILCO.com) to find a sales representative near you.



Type F  
48" x 48" (1219mm x 1219mm)  
Custom sizes available



Type F-TB  
48" x 48" (1219mm x 1219mm)  
Thermally Broken  
R-20+ Insulation  
Custom sizes available

### Product Options

BILCO Equipment access roof hatches are available in galvanized steel, aluminum, stainless steel and copper construction to meet any job requirements.

#### Material

- Steel: 14 gauge (1.9mm) G-90 paint bond galvanized
- Aluminum: 11 gauge (2.3mm)
- Stainless Steel: 14 gauge (1.9mm) Type 304

#### Insulation

- 1" (25mm) fiberglass insulation in cover and 1" fiberboard insulation in curb
- 3" (75mm) Polyisocyanurate (R = 20.3) in cover and curb (Thermally Broken Models\*)

#### Finish

- Steel: Alkyd base red oxide primer
- Aluminum: Mil finish
- Stainless Steel: Bead blast finish
- See page 22 for custom finish options

#### Hardware

- Zinc plated/chromate sealed, engineered composite compression spring tubes
- Type 316 stainless steel

See pages 22-23 for a complete list of curb, finish and other special options.

\* Thermally broken models are not available in double leaf design



Type D  
Special Size



# Roof Access Hatches

## Specialty Roof Hatches

BILCO also has a long history of providing specialty access solutions for virtually any application. Whether for extreme environments, secure facilities, retrofit applications or day-lighting, there is a BILCO roof hatch ready to do the job. Along with an extensive array of available roof hatch options (see page 12-13), BILCO also offers custom-engineering capabilities to ensure safe and reliable roof access no matter what the application.

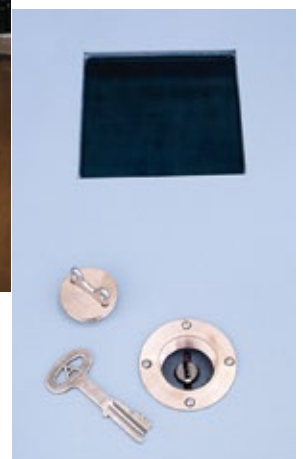


### Benefits

- Easy, one-hand operation
- Weathertight performance
- Energy efficient
- Installs quickly and easily
- Convenient and secure access to roof areas
- Durable construction
- Custom sizes and options readily available

### Features

- Engineered lift assistance
- Heavy-gauge construction
- Positive slam latch with interior and exterior padlock hasps
- Fully insulated and gasketed
- Corrosion resistant hardware
- Bilclip® Flashing System for ease of installation on single-ply roofing
- Pre-punched capflashing to receive the Bil-Guard® 2.0 Hatch Safety Railing System (see pages 14-15 for more information)



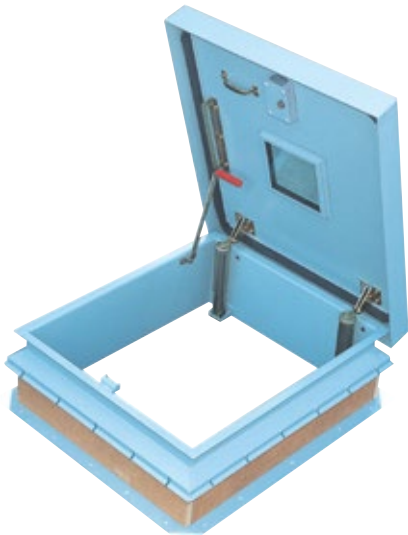
Contact us by phone: 800.366.6530 or email: [commercial@BILCO.com](mailto:commercial@BILCO.com)

Log on to [www.BILCO.com](http://www.BILCO.com) to find a sales representative near you.



## Type GS Daylighting Roof Hatch

All the security and convenience of the Type S roof hatch with the added benefits of a skylight. GS Roof Hatches feature aluminum construction and virtually indestructible polycarbonate domes. Domes are available in clear and translucent and double domes can be specified. Specify Type GSS for special single leaf sizes.



## Security Series Roof Hatch

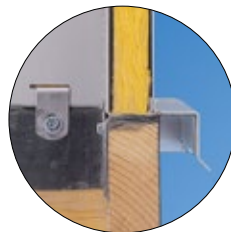
Constructed of heavier gauge materials for high security applications such as prisons, banks, embassies, and pharmaceutical buildings. Roof hatches can be fabricated for field installation of many leading brands of security locks. Other options include security glazing and gunports (see page 23).



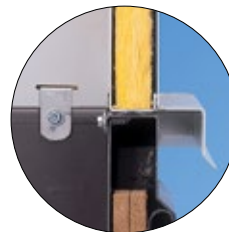
Optional anodized finish shown

## VersaMount® Retrofit Roof Hatch

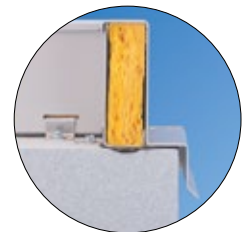
The VersaMount® replacement hatch allows you to replace a damaged roof hatch without re-roofing. Simply remove the cover from the damaged hatch and place the VersaMount® hatch on top of the existing curb. The low-profile curb features a built-in flange and apron and innovative anchor clip system to ensure a fast, secure and weathertight installation. Available in a number of standard sizes.



Job-Built Wood Curbs



Existing Roof Hatch or Job-Built/Prefab Metal Curbs



Job-Built Concrete Curbs

# Safety Products

## Roofing Products

BILCO's roof hatch safety products help workers get on the roof safely and protect them while they are doing their job. Products meet OSHA fall protection standards and make fixed ladder access safer and easier for building maintenance workers.



### Bil-Guard® 2.0 Features and Benefits

- Meets and exceeds OSHA 29 CFR 1910.23
- Non-penetrating attachments; quick and simple installation with standard tools
- Corrosion-resistant aluminum rails and mounting brackets, along with stainless steel hardware, are ideal for any climate
- Safety yellow powder coat paint finish
- Self-closing and locking gate
- Fits all brands of roof hatches with capflashing
- Available in standard and custom sizes

### LadderUP® Features and Benefits

- Adjustable mounting hardware accommodates virtually any ladder rung size or spacing
- Telescoping design is spring balanced for ease of operation
- Automatically locks in the fully raised position to provide the user with a firm and steady hand-hold
- Handy release lever allows the post to be easily lowered to its retracted position
- Available in four levels of corrosion resistance to provide many years of trouble free, dependable service



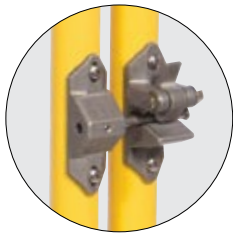
Contact us by phone: 800.366.6530 or email: [commercial@BILCO.com](mailto:commercial@BILCO.com)



Log on to [www.BILCO.com](http://www.BILCO.com) to find a sales representative near you.



Features a patented self-closing and latching gate to ensure safety



## Bil-Guard® 2.0 Safety Railing System

Bil-Guard® 2.0 is a fixed railing system that provides a permanent means of fall protection for hatch openings. Tested and proven to meet and exceed OSHA fall protection standards (29 CFR 1910.29), Bil-Guard® 2.0 features an innovative attachment system that does not penetrate the roofing membrane, installs quickly and easily using basic tools, and does not require special training or certification for proper installation.

ROOF HATCH SIZE (width x length)		ROOF HATCH MODEL	BIL-GUARD 2.0 MODEL
inches	mm		
36 x 30	914 x 762	S	RL2-S
36 x 36	914 x 914	E	RL2-E
48 x 48	1219 x 1219	F	RL2-F
30 x 54	762 x 1372	NB	RL2-NB
30 x 96	762 x 2438	L	RL2-L



## LadderUp® Safety Post

LadderUP® Safety Posts provide easier, safer ladder access through roof hatches, floor access doors and manholes. This telescoping post permanently mounts to the top two rungs of any fixed ladder, providing a positive hand-hold and enabling the user to enter or exit an opening in an upright and balanced position.

MODEL#	MATERIAL/FINISH	WEIGHT	
		lbs.	kg.
LU-1	Steel, yellow powder coat	24	11
LU-2	Steel, hot dip galvanized	24	11
LU-3	Type 304 Stainless Steel, sand blast finish	24	11
LU-4	Aluminum, mill finish	14	7

# Automatic Smoke Vents

## Automatic Smoke Vents

Automatic Smoke Vents protect property and aid firefighters in bringing a fire under control by removing smoke, heat, and gases from a burning building. Ideally suited for large expanses of unobstructed space such as factories, warehouses, auditoriums, and retail facilities smoke vents are available in a number of standard UL-listed sizes.



### Benefits

- Increased evacuation time and decreased risk of smoke inhalation and damage
- Enhanced visibility to allow firefighters to quickly locate the fire
- Protection against secondary ignitions and lateral fire spread
- Exhausting of noxious and potentially explosive fumes
- Structure protection from damaging heat
- Reduced damage to building contents

### Features

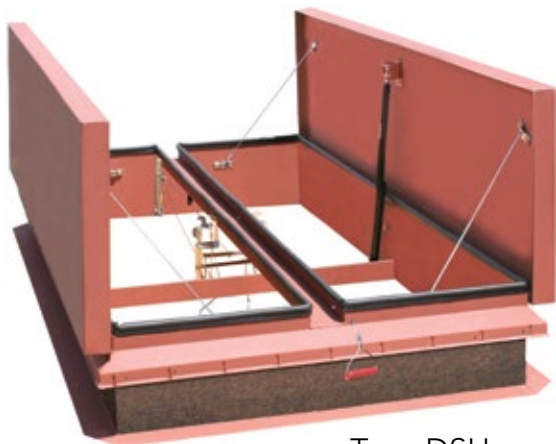
- Fully insulated and gasketed for weathertight performance.
- Thermolatch® II latching mechanism with curb mounted fusible link housing for quick and easy resetting at the roof level
- Exterior and interior pull release handles for manual operation
- Covers open against a 10 psf (49 kg/m<sup>2</sup>) snow/wind load and automatically lock in the open position upon vent activation
- Bilclip® Flashing System for ease of installation on single-ply roofing
- Pre-punched capflashing to receive the Bil-Guard® 2.0 Hatch Safety Railing System (see pages 14-15 for more information)
- Complies with UL790 Class A and UL793
- Available in a number of UL-approved sizes

Contact us by phone: 800.366.6530 or email: [commercial@BILCO.com](mailto:commercial@BILCO.com)

Log on to [www.BILCO.com](http://www.BILCO.com) to find a sales representative near you.



Type S-SV  
Single Leaf  
36" x 30"  
914mm X 762mm  
Special sizes  
available



Type DSH  
Double Leaf 

### Product Options

BILCO Smoke vents feature a positive hold/release mechanism controlled by a single UL-listed 165°F (74°C) fusible link designed to hold the covers closed against a 90 psf (438 kg/m<sup>2</sup>) wind uplift force. Smoke vents are provided with interior and exterior pull release cables to manually open vent covers.

#### Material

- Steel: 14 gauge (1.9mm) G-90 paint bond galvanized steel
- Aluminum: 11 gauge (2.3mm) aluminum

#### Insulation

- 1" (25mm) fiberglass insulation in cover and 1" fiberboard insulation in curb

#### Finish

- Alkyd base red oxide primer (standard on all steel products)
- Mil finish (standard on all aluminum products)
- See page 22 for custom finish options

#### Hardware

- Zinc plated/chromate sealed hardware

#### Control Options *(see pages 22-23 for more information)*

- Motor operation with push button control station
- Winch operation for remote opening and closing
- Electric release for smoke detector or fire alarm activation

### Type DSH Standard Sizes

INCHES	MM	STEEL	STEEL CURB, ALUMINUM COVER	ALUMINUM
48 x 48	1219 x 1219	DSH4848	DSH4848A	DSH4848B
48 x 72	1219 x 1829	DSH4872	DSH4872A	DSH4872B
48 x 90	1219 x 2286	DSH4890	DSH4890A	DSH4890B
48 x 96	1219 x 2438	DSH4896	DSH4896A	DSH4896B
60 x 60	1524 x 1524	DSH6060	DSH6060A	DSH6060B
60 x 72	1524 x 1829	DSH6072	DSH6072A	DSH6072B
60 x 84	1524 x 2134	DSH6084	DSH6084A	DSH6084B
60 x 96	1524 x 2438	DSH6096	DSH6096A	DSH6096B
60 x 120	1524 x 3048	DSH60120	DSH60120A	DSH60120B
66 x 66	1676 x 1676	DSH6666	DSH6666A	DSH6666B
66 x 144	1676 x 3658	DSH66144*	DSH66144A*	DSH66144B*
72 x 72	1829 x 1829	DSH7272	DSH7272A	DSH7272B

\* This size has four leaves



# Automatic Smoke Vents

## Daylighting Automatic Smoke Vents

Offers the same benefits as BILCO Automatic Smoke Vents with a built-in skylight. Featuring a polycarbonate cover design that resists UV degradation and offers superior insulation performance compared to traditional domes. The sloped or domed cover designs meet International Building Code Requirements.



### Benefits

- Provides natural daylighting for reduced energy costs
- Increased evacuation time and decreased risk of smoke inhalation and damage
- Enhanced visibility to allow firefighters to quickly locate the fire
- Protection against secondary ignitions and lateral fire spread
- Exhausting of noxious and potentially explosive fumes
- Structure protection from damaging heat
- Reduced damage to building contents

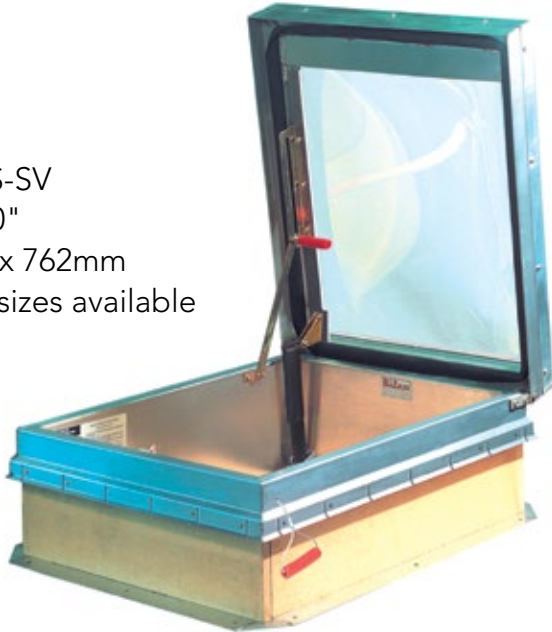
### Features

- Fully insulated and gasketed for weathertight performance.
- Thermolatch® II latching mechanism with curb mounted fusible link housing for quick and easy resetting at the roof level
- Exterior and interior pull release handles for manual operation
- Covers open against a 10 psf (49 kg/m<sup>2</sup>) snow/wind load and automatically lock in the open position upon vent activation.
- Bilclip® Flashing System for ease of installation on single-ply roofing
- Pre-punched capflashing to receive the Bil-Guard® 2.0 Hatch Safety Railing System (see pages 14-15 for more information)
- Complies with UL790 Class A and UL793
- Available in a number of UL-approved sizes

Contact us by phone: 800.366.6530 or email: [commercial@BILCO.com](mailto:commercial@BILCO.com)

Log on to [www.BILCO.com](http://www.BILCO.com) to find a sales representative near you.

Type GS-SV  
36" X 30"  
914mm x 762mm  
Special sizes available



### Product Options

BILCO fire vents feature a positive hold/release mechanism controlled by a single UL-listed 165°F (74°C) fusible link designed to hold the cover closed against a 90 psf (438 kg/m<sup>2</sup>) wind uplift force. Products are provided with interior and exterior pull release cables to manually open vent cover; motorized and winch options also available (see pages 22-23).

#### Material

- Steel: 14 gauge (1.9mm) G-90 paint bond galvanized steel
- Aluminum: 11 gauge (2.3mm) aluminum

#### Cover

- Single Leaf: clear polycarbonate dome or double domes
- Double leaf: Translucent multi-wall polycarbonate

#### Finish

- Mil finish (standard on all aluminum products)
- See page 22 for custom finish options

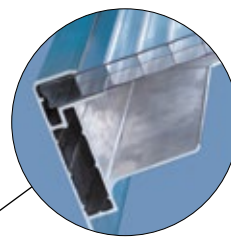
#### Hardware

- Stainless steel hinges and zinc plated/chromate sealed hardware



Optional anodized finish shown

Lumivent®  
Double Leaf



Features a multi-wall polycarbonate cover design that resists UV degradation and offers superior insulation performance compared to traditional domes

### Lumivent Standard Sizes

TYPE	INCHES	MM	MATERIAL
LV4848B	48 x 48	1219 x 1219	Aluminum
LV4872B	48 x 72	1219 x 1829	Aluminum
LV4896B	48 x 96	1219 x 2438	Aluminum
LV6060B	60 x 60	1524 x 1524	Aluminum
LV6096B	60 x 96	1524 x 2438	Aluminum
LV66144B	66 x 144	1676 x 3658	Aluminum



# Automatic Smoke Vents

## Double Leaf – Acoustical

Available in a number of standard UL-listed sizes, ACDSH vents are designed to guard against noise intrusion and at the same time provide the security of dependable automatic venting in the event of a fire. Vents carry an STC-46 sound rating and are ideal for concert halls, theaters, casinos and other interior applications where exterior noise infiltration needs to be minimized.



### Benefits

- Acoustically sound-rated to guard against outside noise intrusion
- Increased evacuation time and decreased risk of smoke inhalation and damage
- Enhanced visibility to allow firefighters to quickly locate the fire
- Protection against secondary ignitions and lateral fire spread
- Exhausting of noxious and potentially explosive fumes
- Structure protection from damaging heat
- Reduced damage to building contents

### Features

- STC 46 sound rating
- Fully insulated and gasketed for weathertight performance.
- Thermolatch® II latching mechanism with curb mounted fusible link housing for quick and easy resetting at the roof level.
- Exterior and interior pull release handles for manual operation
- Covers open against a 10 psf (49 kg/m<sup>2</sup>) snow/wind load and automatically lock in the open position upon vent activation.
- Bilclip® Flashing System for ease of installation on single-ply roofing
- Pre-punched capflashing to receive the Bil-Guard® 2.0 Hatch Safety Railing System (see pages 14-15 for more information)
- Complies with UL790 Class A and UL793
- Available in a number of UL-approved sizes



Contact us by phone: 800.366.6530 or email: [commercial@BILCO.com](mailto:commercial@BILCO.com)



Log on to [www.BILCO.com](http://www.BILCO.com) to find a sales representative near you.

STC-46  
Sound Rating



Type ACDSH 



*Thermolatch® II latching mechanism with curb mounted fusible link housing for quick and easy resetting at the roof level.*

### Product Options

BILCO fire vents feature a positive hold/release mechanism controlled by a single UL-listed 165°F (74°C) fusible link designed to hold the cover closed against a 90 psf (438 kg/m<sup>2</sup>) wind uplift force. ACDSH units are provided with interior and exterior pull release cables to manually open vent cover; motorized and winch options also available (see pages 22-23).

#### Material

- Steel: 14 gauge (1.9mm) G-90 paint bond galvanized steel

#### Insulation

- 3" (75mm) fiberglass insulation in cover and curb

#### Finish

- Alkyd base red oxide primer
- See page 22 for custom finish options

#### Hardware

- Zinc plated/chromate sealed hardware

TYPE	INCHES	MM
ACDSH4848	48 x 48	1219 x 1219
ACDSH4860	48 x 60	1219 X 1524
ACDSH4872	48 x 72	1219 x 1829
ACDSH4890	48 x 90	1219 x 2286
ACDSH4896	48 x 96	1219 x 2438
ACDSH6060	60 x 60	1524 x 1524
ACDSH6096	60 x 96	1524x 2438
ACDSH66120	66 x 120*	1524 x 3048
ACDSH66144	66 x 144*	1676 x 3658
ACDSH7272	72 x 72	1829 x 1829

\* This size has four leafs

# Roofing Product Options



Stainless Steel Hardware

## Common Options

### Stainless Steel Hardware

For installation in highly corrosive environments, Bilco smoke vents and roof hatches may be equipped with Type 316 stainless steel hardware, including: slam latch and lifting mechanism assemblies; hold-open and guide arms; and all brackets, hinges, pins, and fasteners.

### Curb Options

All BILCO roofing products may be specified with either a curb liner (metal insulation liner of the same materials as the curb and capflashing) or a fully enclosed curb (full metal insulation liner of the same materials as the curb, which replaces the capflashing). Built-in louvers are available for roof hatches and for automatic smoke vents to meet elevator-shaft code requirements. Base flanges can be supplied with configurations for most brands of metal building roof panels. This option offers simplified installation, and includes a built-in self-drainage feature that eliminates water accumulation on the up-slope side.



Curb Modification for Metal Buildings

### Insulation

BILCO offers insulation options to enhance the energy efficiency of its roofing products. Standard roof products are supplied with standard 1" (25mm) fiberglass insulation in the covers and 1" (25mm) fiberboard insulation in the curb. When specified, products can be supplied with up to 2" (50mm) of Styrofoam or polyisocyanurate insulation in the cover and curb. Single leaf roof hatches can also be supplied in a thermally broken design that features 3" (75mm) of polyisocyanurate insulation in the cover and curb.



Built-in Louvers

### Special Finishes

- Factory applied powder coat paint finish is available on all steel and aluminum products. Finish is available in four standard colors and custom colors can be specified.
- Kynar® finish in custom colors (aluminum products only)
- Tnemec® finish in custom colors (steel and aluminum products)
- Clear anodized finish (aluminum products only)
- Custom finishes can also be specified

### Powder Coat Standard Colors



White



Yellow



Bronze



Black



Winch Operation

### Motorized or Winch Operation

To provide a convenient means of ventilating work areas, automatic smoke vents can be equipped with motor operators for actuation by remote push-button control or other electrical signal. They can also be furnished with rigging for manual winch operation at the floor level. Roof hatches can also be designed for motor or winch operation.



Motorized Operation

### Other Options

In addition to standard options, BILCO's custom engineering capabilities can provide you with the exact roof product to meet your unique requirements.

Contact us by phone: 800.366.6530 or email: [commercial@BILCO.com](mailto:commercial@BILCO.com)

Log on to [www.BILCO.com](http://www.BILCO.com) to find a sales representative near you.



Keyed Cylinder Locks

## Roof Hatch Options

### Security

All BILCO roof hatches are supplied with a standard slam lock that includes an interior and exterior padlock hasp to prevent unauthorized access. BILCO also offers the options listed below for enhanced building security.

### Keyed Cylinder Locks

Deadbolt cylinder locks provide keyed exterior access and are available with either keyed or turn knob interior access. Cylinder locks are an ideal security enhancement for many applications. For added security and weathertightness, the lock cylinder is accessed from the exterior through a gasketed, threaded deck plate.



Detention Locks

### Detention Locks

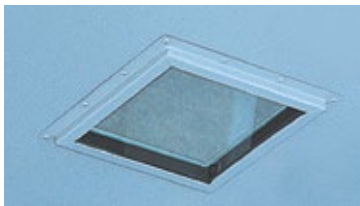
Detention locks provide keyed interior and exterior access and are ideal for correctional facilities and other buildings requiring a maximum level of security. For added security and weathertightness, the lock is accessed from the exterior through a gasketed, threaded deck plate. BILCO roof hatches can be prepared for field installation of many leading lock brands.

### Emergency Egress Lock

BILCO roof hatches can be supplied with a panic lock for rapid egress in an emergency situation. Panic locks are available with keyed exterior access when specified.

### Indicator Switches

Allow roof hatches to be wired into a building's alarm system. Indicator switches are curb mounted and send a signal to the alarm control panel when the hatch cover is opened.



Security Glazing

### Security Glazing

Security glazing allows personnel to visibly scan a secure area before entering or exiting a roof area. Glazing is available in a number of ballistic ratings with varying levels of security.

## Smoke Vent Options

### Electric Activation

Automatic smoke vents can be supplied with an electric Thermolatch® to allow the vents to be operated by a smoke detector or fire alarm control panel. In addition to electric activation, these vents feature fusible link activation and provisions for manual operation. Electric latches can be supplied for 115 VAC, 24 VAC, 220 VAC, and 24V DC power requirements.

### Security Grilles

Heavy bars permanently welded in place across the curb opening. Bars are spaced to prevent building access and maximize ventilation area.

### Explosion Vents

BILCO Type SV and Type DSH automatic smoke vents may also be equipped to operate as explosion vents or as combination fire/explosion vents. The explosion release mechanism is preset and factory-tested to release at between 25 lb/ft<sup>2</sup> and 30 lb/ft<sup>2</sup> – 122 kg/m<sup>2</sup> and 146 kg/m<sup>2</sup> of pressure on the underside of the covers. Not available on Type ACDSH or Lumivent models.

### Lockable Enclosure

The exterior manual pull release may be supplied with an enclosure that can be padlocked to prevent unauthorized opening of the covers from the roof level.

### Indicator Switches

Allow vents to be wired into a building's alarm system. Indicator switches are curb mounted and send a signal to the alarm control panel when the vent covers are opened.



Electric Activation



Explosion Vents



# Floor Access Doors

## Drainage Frame - Pedestrian Loading

Designed for exterior or other fluid prevalent applications, BILCO channel frame floor doors provide reliable access to equipment stored underground or below/between building floors. Available in a wide range of standard sizes and in single- or double-leaf formats, all BILCO floor access doors feature heavy-duty construction and positive latching mechanisms to help prevent unauthorized access.



### Benefits

- Convenient access to underground areas
- Allows for easy inspection of utilities, pumps, and other underground equipment
- Smooth, easy, one-hand operation
- Rugged construction is designed for many years of trouble-free service

### Features

- Threaded, fully welded drain coupling assures liquid flow management
- Engineered lift assistance for smooth, easy, one-hand operation
- Automatic hold-open arm with convenient release handle securely locks the cover in the open position
- Full welded and reinforced construction
- Positive stainless steel latching mechanism and corrosion resistant hardware

Contact us by phone: 800.366.6530 or email: [commercial@BILCO.com](mailto:commercial@BILCO.com)

Log on to [www.BILCO.com](http://www.BILCO.com) to find a sales representative near you.



**Aluminum**

Type J-AL - Single Leaf  
Type JD-AL - Double Leaf



**Steel**

Type J - Single Leaf  
Type JD - Double Leaf

**Product Options**

Single or double leaf covers are constructed of 1/4" (6.35mm) diamond pattern plate and reinforced for a 300 psf (1464 kg/m<sup>2</sup>) live load. Features include heavy-duty construction, standard Type 316 stainless steel slam lock and fasteners, and a built-in concrete anchoring system for ease of installation.

**Cover and Frame Material**

- Steel: 1/4" (6.35 mm)
- Aluminum: 1/4" (6.35 mm)

**Finish**

- Steel: Alkyd base red oxide primer
- Aluminum: Mill Finish with a bituminous coating on frame exterior
- See page 38 for custom finish options

**Hardware**

- Steel: Type 316 stainless steel hinges, engineered composite spring tubes with steel compression springs, and type 316 stainless steel slam latch and fasteners
- Aluminum: Type 316 stainless steel

**Warranty**

- Steel: 5-years
- Aluminum: 25-years

**Other Options**

- Keyed Cylinder Locks
- Grating covers
- Custom sizes

See page 38 for more information and a complete list of options.

INCHES	MM	STEEL	ALUMINUM
24 x 24	610 x 610	J-1	J-1AL
30 x 30	762 x 762	J-2	J-2AL
36 x 30	914 x 762	J-3	J-3AL
36 x 36	914 x 914	J-4	J-4AL
42 x 42	1067 x 1067	J-5	J-5AL
30 x 48	762 x 1219	J-6	J-6AL
36 x 48	914 x 1219	J-7	J-7AL
30 x 60	762 x 1524	J-8	J-8AL
36 x 60	914 x 1524	J-9	J-9AL
36 x 72	914 x 1829	J-10	J-10AL
48 x 30	1219 x 762	JD-1	JD-1AL
48 x 48	1219 x 1219	JD-2	JD-2AL
48 x 72	1219 x 1829	JD-3	JD-3AL
60 x 60	1524 x 1524	JD-4	JD-4AL

\* Types with "D" in the Type # indicate a double leaf configuration



# Floor Access Doors

## Drainage Frame - Vehicular Loading

Designed for exterior or other fluid-prevalent applications subjected to vehicular traffic, BILCO channel frame H20 floor doors provide reliable access to equipment stored underground while meeting AASHTO H-20 wheel loading requirements. Available in a wide range of standard sizes and in single- or double-leaf formats, all BILCO H20 doors feature heavy-duty construction and positive latching mechanisms to help prevent unauthorized access.



### Benefits

- Convenient access to underground areas
- Allows for easy inspection on utilities, pumps, and other underground equipment
- Smooth, easy, one-hand operation
- Rugged construction is designed for many years of trouble-free service

### Features

- Threaded, fully welded drain coupling assures liquid flow management
- Engineered lift assistance for smooth, easy, one-hand operation
- Automatic hold-open arm with convenient release handle securely locks the cover in the open position
- Full welded and reinforced construction for AASHTO H20 wheel loading
- Positive stainless steel latching mechanism and corrosion resistant hardware

Contact us by phone: 800.366.6530 or email: [commercial@BILCO.com](mailto:commercial@BILCO.com)



Log on to [www.BILCO.com](http://www.BILCO.com) to find a sales representative near you.



## Aluminum

Type J-AL H20 - Single Leaf  
Type JD-AL H20 - Double Leaf



## Steel

Type J H20 - Single Leaf  
Type JD H20 - Double Leaf

Note: Designed to withstand an H-20 wheel loading and suitable for use in off-street locations where not subjected to high-density traffic.

### Product Options

Single or double leaf covers are constructed of 1/4" (6.35mm) diamond pattern plate. Features include standard Type 316 stainless steel slam lock and fasteners and a built-in concrete anchoring system for ease of installation.

### Cover and Frame Material

- Steel: 1/4" (6.35 mm)
- Aluminum: 1/4" (6.35 mm)

### Finish

- Steel: Alkyd base red oxide primer
- Aluminum: Mill Finish with a bituminous coating on frame exterior
- See page 38 for custom finish options

### Hardware

- Steel: Type 316 stainless steel hinges, engineered composite spring tubes with steel compression springs, and type 316 stainless steel slam latch and fasteners
- Aluminum: Type 316 stainless steel

### Warranty

- Steel: 5-years
- Aluminum: 25-years

### Other Options

- Keyed Cylinder Locks
- Grating covers
- Custom sizes

See page 38 for more information and a complete list of options.

INCHES	MM	STEEL	ALUMINUM
24 x 24	610 x 610	J-1H20	J-1ALH20
30 x 30	762 x 762	J-2H20	J-2ALH20
36 x 30	914 x 762	J-3H20	J-3ALH20
36 x 36	914 x 914	J-4H20	J-4ALH20
42 x 42	1067 x 1067	J-5H20	J-5ALH20
30 x 48	762 x 1219	J-6H20	J-6ALH20
36 x 48	914 x 1219	J-7H20	J-7ALH20
30 x 60	762 x 1524	J-8H20	J-8ALH20
36 x 60	914 x 1524	J-9H20	J-9ALH20
36 x 72	914 x 1829	J-10H20	J-10ALH20
48 x 30	1219 x 762	JD-1H20	JD-1ALH20
48 x 48	1219 x 1219	JD-2H20	JD-2ALH20
48 x 72	1219 x 1829	JD-3H20	JD-3ALH20
60 x 60	1524 x 1524	JD-4H20	JD-4ALH20

\* Types with "D" in the Type # indicate a double leaf configuration

# Floor Access Doors

## Non-Drainage Frame - Pedestrian Loading

Designed for interior use or exterior applications where water or liquid infiltration into the access opening is not a concern. BILCO angle frame floor access doors provide 150 PSF reinforcing for pedestrian applications and engineered lift assistance for easy one-hand operation. Available in a number of standard single leaf and double leaf sizes and special sizes can be specified to meet unique access requirements.



### Benefits

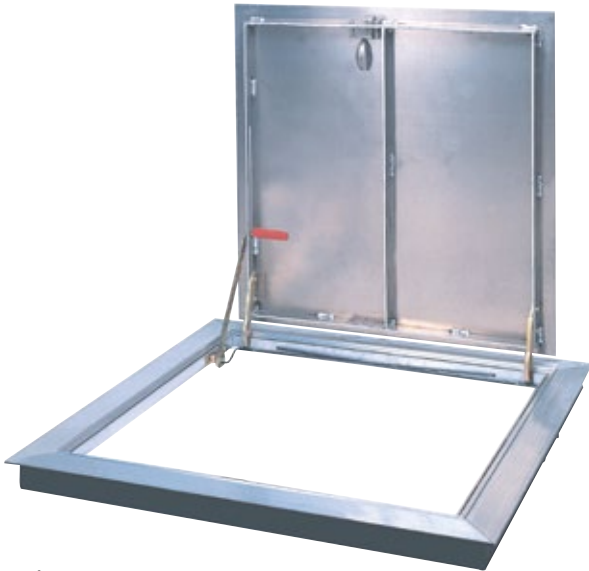
- Convenient access to underground areas
- Allows for easy inspection on utilities, pumps, and other underground equipment
- Smooth, easy, one-hand operation
- Rugged construction is designed for many years of trouble-free service

### Features

- Engineered lift assistance for smooth, easy, one-hand operation
- Automatic hold-open arm with convenient release handle securely locks the cover in the open position
- Full welded and reinforced construction
- Positive stainless steel latching mechanism and corrosion resistant hardware

Contact us by phone: 800.366.6530 or email: [commercial@BILCO.com](mailto:commercial@BILCO.com)

Log on to [www.BILCO.com](http://www.BILCO.com) to find a sales representative near you.



## Aluminum

Type K - Single Leaf

Type KD - Double Leaf

### Product Options

Single or double leaf covers are constructed of 1/4" (6.35mm) diamond pattern plate. Features include standard zinc plated/chromate sealed hardware and a versatile anchoring system for ease of installation.

#### Cover and Frame Material

- Steel: 1/4" (6.35 mm)
- Aluminum: 1/4" (6.35 mm)

#### Finish

- Steel: Alkyd base red oxide primer
- Aluminum: Mill Finish with a bituminous coating on frame exterior
- See page 38 for custom finish options

#### Hardware

- Type 316 stainless steel slam lock and zinc plated/chromate sealed hardware

#### Warranty

5-years

#### Other Options

- Keyed Cylinder Locks
- Grating covers
- Custom sizes

See page 38 for more information and a complete list of options.

INCHES	MM	STEEL	ALUMINUM
24 x 24	610 x 610	Q-1	K-1
30 x 30	762 x 762	Q-2	K-2
36 x 30	914 x 762	Q-3	K-3
36 x 36	914 x 914	Q-4	K-4
42 x 42	1067 x 1067	--	K-5
48 x 48	1219 x 1219	--	KD-2
48 x 72	1219 x 1819	--	KD-3
60 x 60	1524 x 1524	--	KD-4



## Steel

Type Q - Single Leaf

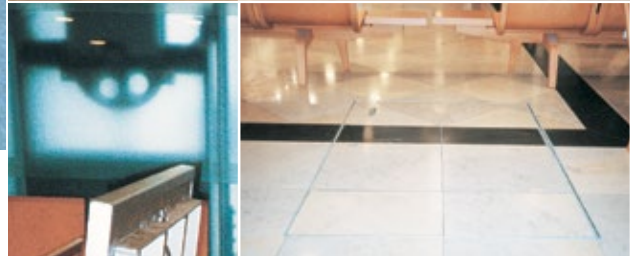
Double Leaf not available



# Floor Access Doors

## For Finished Flooring

BILCO's floor access doors allow design professionals to provide concealed access in decorative flooring materials. The unique cover designs will accept a wide variety of architectural materials, allowing the doors to be used in virtually any application. Whether it's carpet, tile, hardwood, or even granite, each door is precisely engineered with lift assistance to afford the user with easy, one-hand operation.



### Benefits

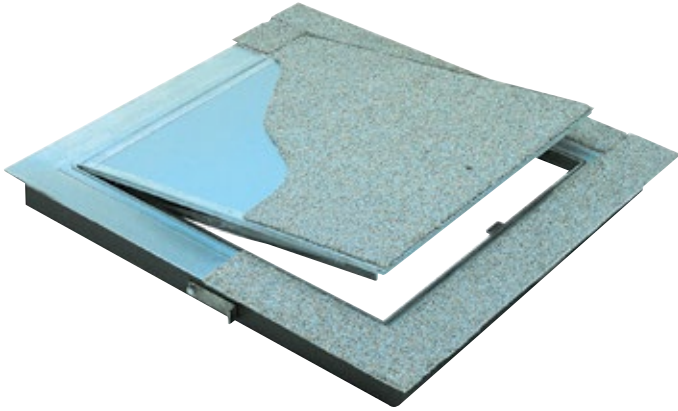
- Concealed access to underground areas
- Smooth, easy, one-hand operation
- Rugged construction is designed for many years of trouble-free service

### Features

- Unique cover designs accept flooring materials
- Engineered lift assistance for smooth, easy, one-hand operation
- Automatic hold-open arm with convenient release handle securely locks the cover in the open position
- Full welded and reinforced construction
- Positive stainless steel latching mechanism and corrosion resistant hardware

Contact us by phone: 800.366.6530 or email: [commercial@BILCO.com](mailto:commercial@BILCO.com)

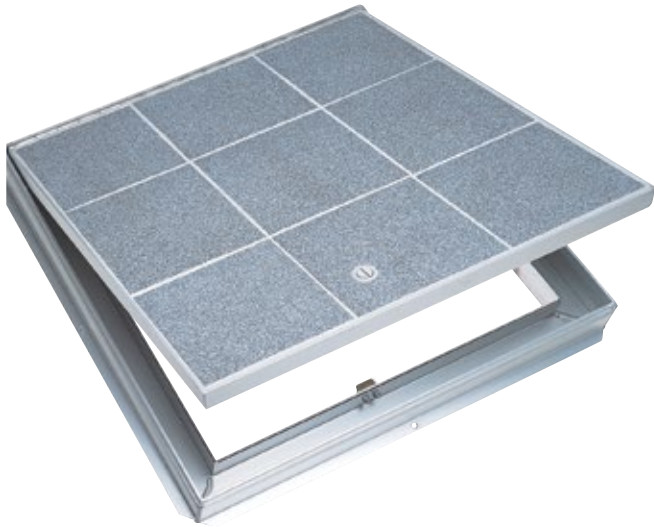
Log on to [www.BILCO.com](http://www.BILCO.com) to find a sales representative near you.



## Carpet /Composite Flooring

Type T - Single Leaf

Type TD - Double Leaf



## Architectural Flooring

Type TER - Single Leaf

Type TRD - Double Leaf

### Product Options

Single or double leaf covers are constructed of 1/4" (6.35mm) plate and reinforced for a 150 psf (732 kg/m<sup>2</sup>) live load. Features include a versatile anchoring system for ease of installation.

#### Cover and Frame Material:

- 1/4" (6.35 mm) Aluminum

#### Cover:

- Type T & TD: Will accept carpet or composition flooring material 1/8" (3.18mm) or 3/16" (4.76mm) in thickness. Features cover and frame mounted molding strips to accept floor covering.
- Type TER & TRD: Designed with a pan cover to accept a variety of flooring materials up to 1" (25.4mm) in thickness. Each door is spring balanced at the factory to ensure smooth, easy operation upon installation of the specified flooring material in the field.

#### Finish:

- Mill Finish with a bituminous coating on frame exterior

#### Hardware:

- Zinc plated and chromate sealed
- Type 316 stainless steel

#### Warranty

- 5-years

#### Other Options

- Keyed Cylinder Locks
- Custom sizes

See page 38 for more information and a complete list of options.

INCHES	MM	SMOOTH PLATE	FILLABLE PAN
24 x 24	610 x 610	T-1	TER-1
30 x 30	762 x 762	T-2	TER-2
36 x 30	914 x 762	T-3	TER-3
36 x 36	914 x 914	T-4	TER-4
42 x 42	1067 x 1067	T-5	TER-5
48 x 48	1219 x 1219	TD-2	TRD-2
48 x 72	1219 x 1829	TD-3	TRD-3
60 x 60	1524 x 1524	TD-4	TRD-4

\* Types with "D" in the Type # indicate a double leaf configuration



# Special Application Doors

BILCO is the world leader in the design and manufacture of floor access doors for special applications. In addition to the doors shown on the following pages, our engineering staff can custom design products to meet the access requirements for virtually any application.



## Specialty Floor Access Doors

- Fire Rated
- Surface Mount
- High Load Capacity
- Precast Vault
- Transit System Emergency Evacuation Doors
- Special sizes for equipment access

All BILCO floor access doors feature engineered lift assistance for easy, one-hand operation regardless of door size and weight.

Contact us by phone: 800.366.6530 or email: [commercial@BILCO.com](mailto:commercial@BILCO.com)



Log on to [www.BILCO.com](http://www.BILCO.com) to find a sales representative near you.



## Fire-Rated Floor Access Doors

Maintains the fire rating of a 2-hour floor ceiling assembly where access is required between building floors. Fire rated floor doors feature an automatic closing system, intumescent fire resistant coating, and a pan cover designed to accept architectural flooring materials for concealed access.

### Features & Benefits

- Fire rated per NFPA 251, NFPA 288, ASTM E119, and BS476: Part 22 requirements
- Available in a variety of UL-listed sizes
- Accepts finished flooring up to 1/2" (12.5mm) in thickness
- Constructed with corrosion resistant materials to provide many years of trouble free, dependable service
- Available in a number of standard and special sizes to satisfy any requirement



*Shown with optional safety post & chains and padlock hasp*

## Surface Mount Access Door

Provides a cost effective solution for access to underground vaults that do not require the use of a flush-mounted door. Features a concealed internal mounting flange that makes installation easy and secure. Simply position the door over the vault opening and bolt it into place. Ideal for applications where the infiltration of contaminants is a concern. Its gasketed, over-lapping cover design sheds water and prevents debris and other pollutants from entering the opening.

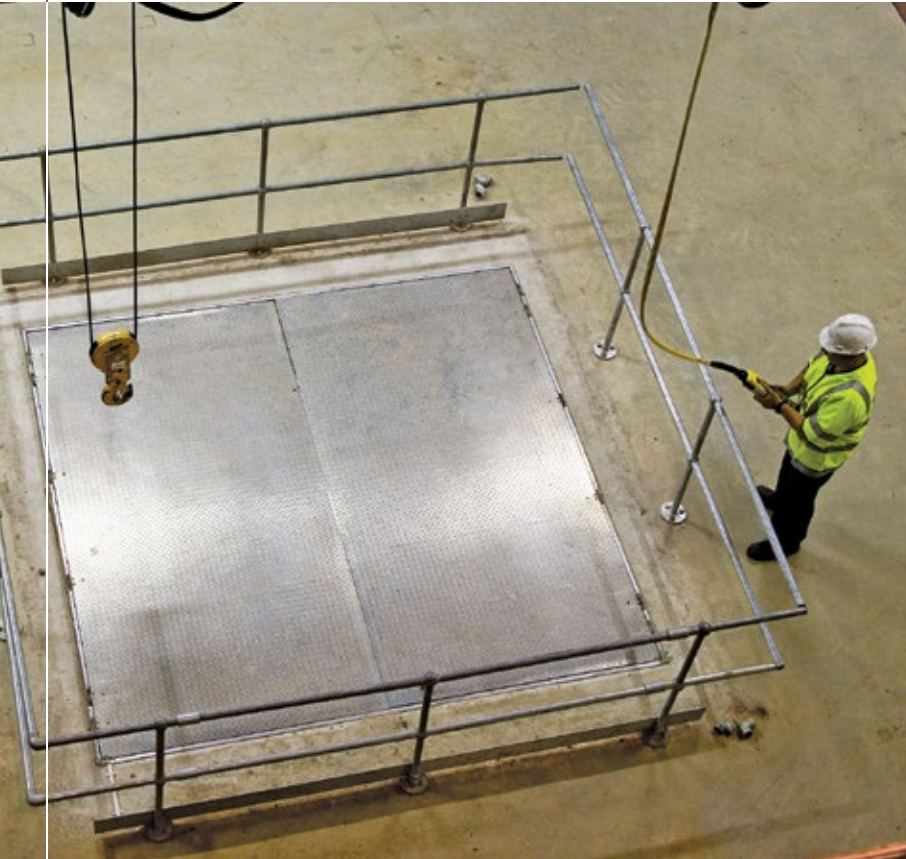


## Type HLC – High Load Capacity

Type HLC door is specially designed for extreme loading conditions generated by vehicles such as large aircraft, heavy equipment and forklift trucks. Doors are constructed of steel and covers are reinforced for a 200 psi + 30% impact live load.

# Special Application Doors

BILCO floor access doors utilize an engineered lift assistance design that is time tested and proven to ensure reliable operation and performance. Cover weights are calculated for all products and the required lift assistance is determined through engineering formulas to ensure easy and counter-balanced operation.



## Specialty Floor Access Doors

- Fire Rated
- Surface Mount
- High Load Capacity
- Precast Vault
- Transit System Emergency Evacuation Doors
- Special sizes for equipment access

All BILCO floor access doors feature engineered lift assistance for easy, one-hand operation regardless of door size and weight.



Contact us by phone: 800.366.6530 or email: [commercial@BILCO.com](mailto:commercial@BILCO.com)



Log on to [www.BILCO.com](http://www.BILCO.com) to find a sales representative near you.



## Special Sizes

Type JD and JD-AL doors can be manufactured to virtually any size to meet your unique access requirements. Even extremely large doors, such as the one shown, are designed for easy operation by one person.



## Transit System Emergency Evacuation Doors

Type JD and JD-AL emergency evacuation doors are designed to provide egress from underground rapid transit system platforms and tunnels in emergency situations. Doors are designed with stainless steel panic hardware and compression spring operators for ease of operation. Other important features include H-20 reinforcing, handrails, custom signage and a slip-resistant cover finish.



## Precast Vault Access Doors

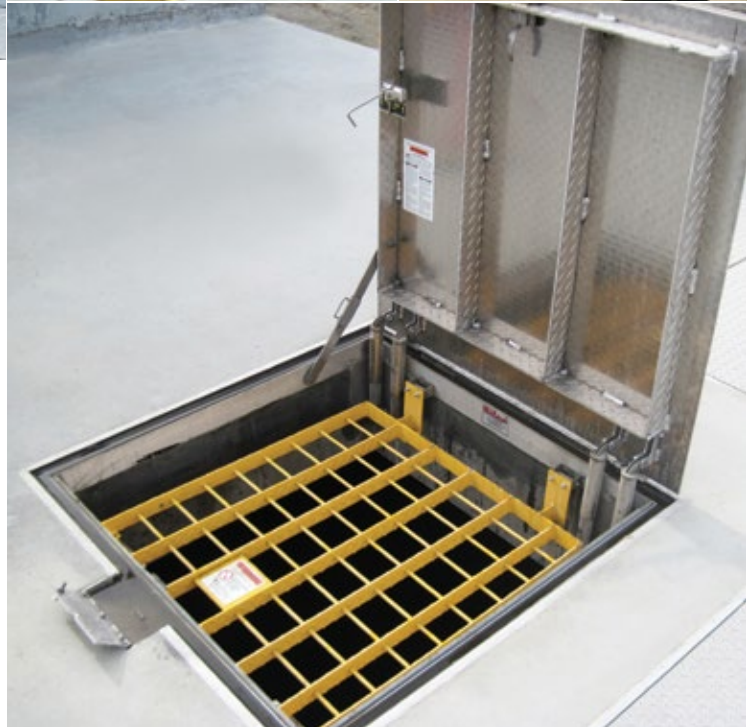
Type PCM & PDCM single and double leaf access doors incorporate several innovative features that reduce the amount of labor required to cast the door into a concrete vault. To simplify installation on a standard concrete vault form, doors are designed with a 6" (152mm)-high frame (other frame depths available) and have no vertical projections below the frame. Doors are constructed of aluminum and feature a peel-off covering to protect the door's finish during the pouring process.



# Safety Products

## Floor Access Doors

BILCO's floor access door safety products help workers do their job safely by protecting them while they are working. Products meet OSHA fall protection standards and make fixed ladder access safer and easier.



### Fall Protection Grating System Features

- Provides a permanent means of fall protection under access doors
- Exceeds OSHA fall protection requirements
- Aluminum grating with a safety-yellow powder coat paint finish for added durability
- Equipped with a stainless steel automatic hold-open device that securely locks the panel in the full open position
- Stainless steel hardware for corrosion resistance
- Supplied with a padlock hasp for added security
- Backed by a 25-year manufacturer's warranty

### LadderUP® Features

- Adjustable mounting hardware accommodates virtually any ladder rung size or spacing
- Telescoping design is spring balanced for ease of operation
- Automatically locks in the fully raised position to provide the user with a firm and steady hand-hold
- Handy release lever allows the post to be easily lowered to its retracted position
- Available in four levels of corrosion resistance to provide many years of trouble free, dependable service

Contact us by phone: 800.366.6530 or email: [commercial@BILCO.com](mailto:commercial@BILCO.com)

Log on to [www.BILCO.com](http://www.BILCO.com) to find a sales representative near you.



## Fall Protection Grating System

Fall Protection Grating System allows workers to safely inspect pumps and monitor underground areas. System permanently mounts under access door covers and are available as either factory-installed or as field-installable kits for all standard-sized Bilco Type J, JD, J-AL and J-DAL models. Grating systems are also available for special sizes.



*The unique pintle hinge design allows the fall protection grating panel to open to the full 90° position to maximize the area available for access*



## BILCO LadderUp® Safety Post

LadderUP® Safety Posts provide easier, safer ladder access through roof hatches, floor access doors and manholes. This telescoping post permanently mounts to the top two rungs of any fixed ladder, providing a positive hand-hold and enabling the user to enter or exit an opening in an upright and balanced position.

MODEL#	MATERIAL/FINISH	WEIGHT	
		lbs.	kg.
LU-1	Steel, yellow powder coat	24	11
LU-2	Steel, hot dip galvanized	24	11
LU-3	Type 304 Stainless Steel, sand blast finish	24	11
LU-4	Aluminum, mill finish	14	7

# Floor Door Options



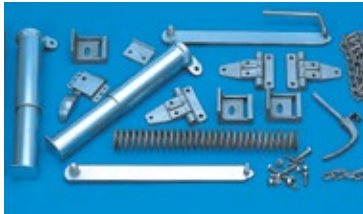
Cylinder Lock



Recessed Padlock Hasp



Security Cover Plugs



Stainless Steel Hardware



Special Finishes



Grating Panel Covers

BILCO floor access doors can include any of the modifications shown below. In addition, BILCO's engineering department will custom design doors for your unique applications.

## Locking and Latching Devices

The following lock options are available to add security and prevent unauthorized access:

- Cylinder lock with a keyway protected by a threaded cover plug
- Recessed padlock hasp covered by a flush hinged lid
- Security cover plugs
- Interior or exterior padlock lugs
- Panic locks for emergency egress
- Detention locks for high security applications

In addition to the options shown, BILCO's engineering department can custom design products to meet your security needs.

## Special Finishes

- Factory applied powder coat paint finish is available on all steel and aluminum products. Finish is available in four standard colors and custom colors can be specified.
- Hot dipped galvanized finish (steel products only)
- Kynar® finish in custom colors (aluminum products only)
- Tnemec® finish in custom colors (steel and aluminum products)
- Clear anodized finish (aluminum products only)
- Custom finishes can also be specified.

### Powder Coat Standard Colors



White



Yellow



Bronze



Black

## Stainless Steel Hardware

For installation in highly corrosive environments or when prolonged exposure to hot water or steam is anticipated, BILCO recommends stainless steel hardware. Standard Type 316 stainless steel hardware is featured on Type J-AL, JD-AL, J-AL H20 and JD-AL H20 doors. Other products can be supplied with stainless steel hardware upon request.

## Other Options

- Steel or aluminum grating
- Submersible pump guide rail brackets
- Metal enclosed insulation
- Slip-resistant coatings
- Drop-in installation modifications
- Handrails
- Panic hardware
- Snow and ice melting cables
- Electric motor operation
- Fall protection grating
- Wireless security system for intrusion detection

Contact us by phone: 800.366.6530 or email: [commercial@BILCO.com](mailto:commercial@BILCO.com)



# Additional Products

## Door Security Products

Barracuda door locking devices are designed to be installed in a matter of seconds in emergency situations to protect occupants against building intruders. Products are available for both inward and outward swinging doors and can be purchased on-line through our national distributors.

### Features & Benefits

- Fast and simple to use; installs in a matter of seconds
- Less expensive than and more secure than small, inexpensive devices
- Free-standing device (not permanently attached to the door) that can be transferred between access points
- No maintenance or installation costs
- All steel construction with durable powder-coat paint finish



## Residential Products

### BILCO Basement Doors

Basement doors are ideal for access to basement storage areas and for moving large items into finished basement areas. The wide opening allows storage items such as deck and patio furniture, and large items such as pool tables and large furniture, to be easily moved in and out of a basement. Doors meet building code requirements for emergency egress and are available in prime painted steel and high-density polyethylene construction.

### Window Well Systems

Add natural daylight and ventilation to basement rooms, making them as warm and comfortable as any area in the home. Window Well Systems meet building code requirements for emergency egress and are constructed from non-corrosive materials for many years of maintenance-free service. Systems simply snap or slide together on site for easy installation and dome covers are available to protect the well opening.



# Experience. Innovation.

- *Commercial Access Products* • *Fire Protection Products* • *Natural Ventilators*
- *Basement Access Products* • *Basement Egress Products*

## United States Sales

The BILCO Company

Phone: 800.366.6530

Fax: 203.535.1582

E-mail: [commercial@bilco.com](mailto:commercial@bilco.com)

Log-on to [www.bilco.com](http://www.bilco.com) to find your local U.S. sales representative

## International Sales

### Canada

BILCO Canada

Phone: 519.659.7331

Fax: 519.455.8593

E-mail: [canada@bilco.com](mailto:canada@bilco.com)

### Other International Countries

The BILCO Company

Phone: 800.366.6530

Fax: 203.535.1582

E-mail: [export@bilco.com](mailto:export@bilco.com)

[WWW.BILCO.COM](http://WWW.BILCO.COM)



an AmesburyTruth company