



# SafetyRailCompany

Fall Protection for Life and Compliance



## SRC MODULAR CROSSOVER STAIRS

SAFE ACCESS OVER CHALLENGING ROOFTOP OBSTACLES



PROUDLY 100%  
MADE IN AMERICA



## SRC MODULAR CROSSOVER STAIRS (MCS)

Many industrial and commercial sites have a variety of equipment and obstacles that personnel must work around — and oftentimes going up and over these barriers is the quickest and safest path. Whether up on the roof or inside the facility, the SRC Modular Crossover Stairs (MCS) system provides the safest, most versatile solution!

Perfect for any obstacle, from a dangerous ammonia line to a large complex impediment, the MCS system is a one-product, multi-component solution that can do it all. No other system on the market offers our configurable, plug-and-play design — with components that work seamlessly together and can grow with you as your needs change.

### QUALITY COMPONENTS. SMART PLUG-AND-PLAY DESIGN.

**IN STOCK**

READY TO SHIP

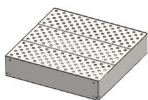
**1**

**HANDRAILS**



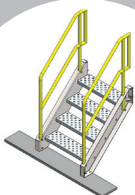
**2**

**UNIVERSAL PLATFORMS**



**3**

**SAFETY STAIRS**



#### PRIMARY COMPONENTS

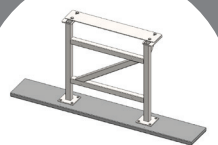
Simple to complex design.  
No custom fabrication, special tools, or equipment needed.



#### ACCESSORY COMPONENTS



**LADDER UNITS**



**TOWER SUPPORTS**

# THE MOST VERSATILE SYSTEM ON THE MARKET

QUALITY DESIGN, RUGGED CONSTRUCTION, PLUG-AND-PLAY FUNCTIONALITY

## USES:

- Rooftops
- Construction Sites
- Manufacturing Facilities

## FEATURES

- Smart Plug & Play Design
- Extended Lengths
- Multi-Level Options
- Standard Sizes in Stock, Ready to Ship
- No Hot-work Permits or Cutting Required
- Pre-engineered System for OSHA Compliance

## SPECS:

- Galvanized Platform
- Powder-coated Rail
- Toeboard Included
- OSHA Compliant



Non-slip traction in snowy, icy, or wet conditions

## MCS IS NOT JUST ANOTHER CROSSOVER STAIR IT'S AN INTEGRATED PLUG-AND-PLAY PERSONNEL SAFETY SYSTEM

### STRINGER HEIGHT

Stairs are available in 8" height increments up to 72".

### PLATFORM DIMENSIONS

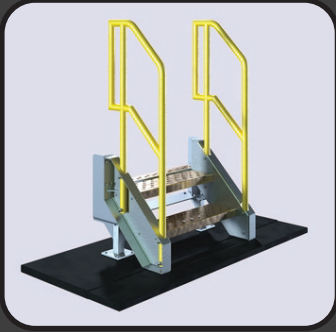
Universal platforms measure 36" x 36" with an ideal system measuring slightly longer than the width of the obstacle.

### TOWER SUPPORTS

As a general rule, a system with 4 or more universal platforms will require tower supports. SRC engineering to specify.

## THE BEAUTY OF SIMPLICITY!

There are only three primary components of the MCS system: handrails, universal platform, and safety stairs. With these off-the-shelf parts, you can build your own personalized walkway with the help of our on-staff engineering team — who utilize CAD-modeling technology to create an MCS system to fit any application.



## MANUFACTURER INSTALLATION AVAILABLE WITH OUR TURN-KEY SERVICE

### SPECIFICATIONS

#### COMPLIANCE STANDARDS

OSHA 29 CFR 1910.23  
OSHA 29 CFR 1910.25  
OSHA 29 CFR 1910.28  
OSHA CFR 1910.29  
OSHA CFR 1910.144  
OSHA CFR 1926.502  
ANSI A1264.1

#### CONSTRUCTION DETAILS

Railings: 1.25" sch. 10 pipe  
Stringer: 7 ga. HRS  
Platform: 12 ga. HRS  
Stair Tread: 1/8" 6061 aluminum  
Foot pad: 24" x 72" recycled plastic  
Tower Supports: 2" EWSQ Tubing

#### DIMENSIONAL DETAILS

Railings: 42" above walking surface  
Universal Platforms: 36" W x 36" L  
Height Range: 2-step to 9-step; (8-72" clear)  
Length Range: Length unrestricted with 108" max. distance between tower supports  
Stair Width: 30" W clear; 36" W overall  
Stair Angle: 45 degrees

#### FINISH DETAILS

Railing: Powder coat safety yellow  
Stringers: Galvanized finish  
Platform: Galvanized finish  
Adjustable Stairs: Galvanized finish

#### ATTACHMENT DETAILS

Can be freestanding with 72" wide foot pad on stringers  
Can be bolted into substrate capable of supporting load rating of stairs and workers



**CONTACT US!**

The MCS system has been independently tested by a 3rd party testing company to verify US accredited testing lab compliance. Details of report forwarded on request.

