

# Your First Step to a Healthy Home

## Mortar Net

# Residential

### INFORMATION FOR BUILDERS

#### The Invention of Mortar Net™

Tom Sourlis, of Sourlis Masonry Restoration, spent 25 years repairing buildings that, in large part, had been damaged by trapped water in masonry walls.

Sourlis knows how expensive it is to tear apart a wall, clear the cavity and rebuild it. As a response to witnessing what water damage can do to a building, Sourlis invented Mortar Net™ and patented its unique dovetail shape.

"The invention is simple and elegant in concept, inexpensive, easy to install and addresses a critical construction need," according to Michael Chusid in the January 1997 issue of *Construction Marketing Today* magazine.

Sourlis has worked on such notable historic buildings as The Rookery, The John J. Glessner House and Holy Family Church. He attended Illinois Institute of Technology for four years as an architecture student.

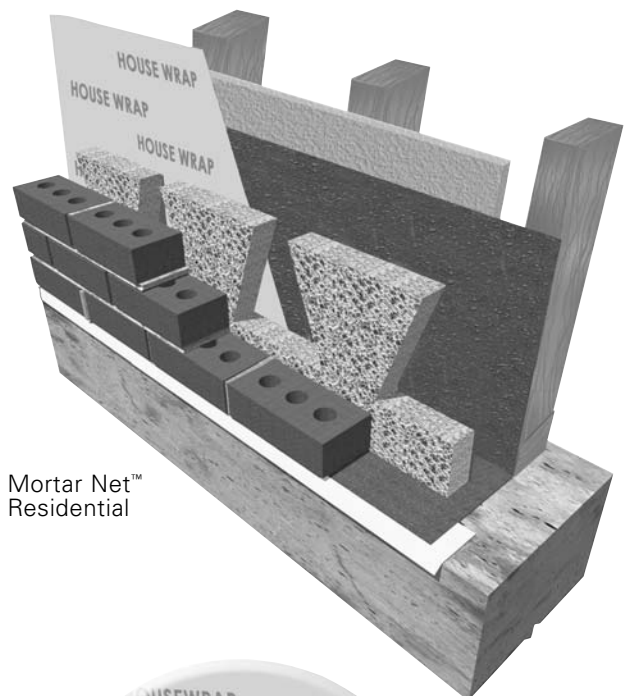
#### Features and Benefits

- Suspends mortar above flashing and weeps.
- Prevents mortar damming for proper water flow and air circulation.
- Lightweight for inexpensive transporting, eliminates fastener and adhesives.
- Unique patented-shaped design and mesh material permit air and water to move through the material.
- Compressible to allow for cavity wall size variations.
- Durable, non-reactive material lasts the life of the building.
- Resists UV and insect damage.
- Inexpensive—eliminates the need for any other products to deal with mortar droppings, including pea gravel, cotton wicks and batter boards, so labor costs are reduced.
- Made of recycled polyester with an antimicrobial to control mold growth.

#### The Mortar Net™ Drainage System

The efficient management of moisture that Mortar Net™ Residential provides, eliminates efflorescence on interior and exterior masonry walls, prevents damage caused by freeze/thaw cycles and is the first step in preventative measures that allow mold to develop, ensuring optimum performance of the walls.

Mortar Net™ Weep Vents are used in conjunction with Mortar Net™ Residential to prevent insects and debris from clogging weep holes as well as to ensure that masonry walls maintain their finished appearance.



Mortar Net™ Residential



Mortar Net™ Weep Vents



Call 800-664-6638  
[www.mortarnet.com](http://www.mortarnet.com)

# Your First Step to a Healthy Home

## Mortar Net

# Residential

### INFORMATION FOR BUILDERS

#### Easy Installation

Mortar Net™ Residential is easy to use. It requires no fasteners or adhesives, no special skills or tools. After the first one or two courses of bricks are laid, place a continuous row of Mortar Net™ Residential in the cavity on the flashing against the back of the brick at the base of the wall. Mortar Net™ Residential must rest on the horizontal leg of the masonry through wall flashings. Push the strip end downward and seat on the horizontal leg of the flashing. Flashing should extend to at least 6" above the top of the Mortar Net™.

Mortar Net™ Residential is not recommended for walls over 9' in height. For walls over 9' or if excessive mortar droppings are anticipated, the Mortar Net™ Residential must be installed at higher levels of the wall as well as the base of the wall. Simply set the Mortar Net™ Residential on top of wall ties at mid wall or other heights as desired. Wall should be properly flashed and flashing supported at this level to protect interior spaces from moisture traveling via mortar "bridging".

Mortar Net USA, Ltd recommends a 1" cavity air space for residential construction. Mortar bridging can occur in cavities that are smaller. Should mortar bridging occur across the cavity space as the brick veneer wall is constructed, the mason must clean the mortar protrusions and bridges off the back of the bricks. Reasonable care must be taken to prevent excessive mortar droppings.

Multiple thicknesses of Mortar Net™ Residential may be installed to match cavity widths. Inspection, preparation, and installation procedure for multiple-thickness is the same as for single thickness. When installing multiple thicknesses, align the dovetail sections with each other.

Cavity should be no more than 1/4" wider than 1.0" and 2.0" thick material, and 0.4" thick material should touch both the outer and inner wall, insulation, or filler used to adjust the cavity size. Mortar Net™ Residential is compressible to allow for variation in wall cavities.

Mortar Net™ Residential must be used in conjunction with impermeable through wall flashings that are recommended by the flashing manufacturer for that use. Mortar Net™ Residential used in combination with fast acting weep materials such as Mortar Net™ Weep Vents create a system for proper water drainage and ventilation.

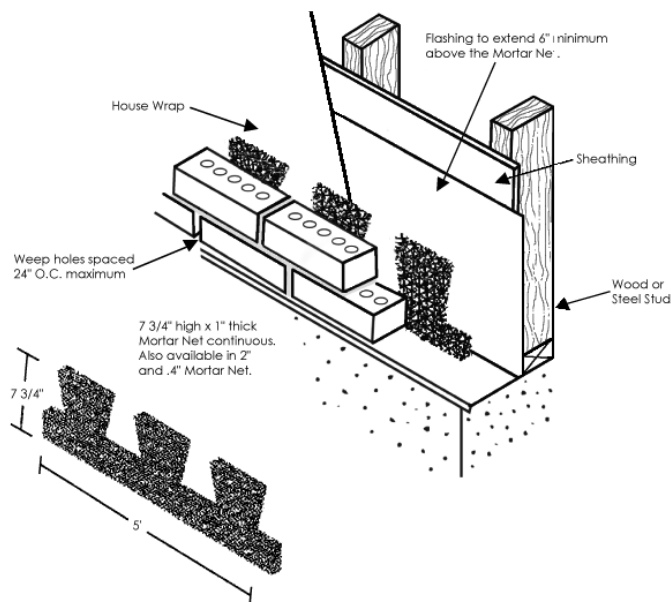
Mortar Net™ Residential keeps brick veneer walls dry and free from trapped moisture, reducing the conditions for mold growth. Mortar Net™ USA, LTD does not guarantee the elimination of moisture problems due to other aspects of construction procedures such as rain soaked wall-board, leaking plumbing fixtures, etc.

#### How Mortar Net™ Residential Works

Mortar Net™ for brick is used in traditional masonry, steel and wood stud cavity wall construction. Mortar Net™ Residential is placed on top of the flashing inside the wall cavity where it catches and permanently suspends mortar droppings above the level of the weep holes and flashing.

#### Sizes

Width	Height	Length	Package Qty.
2.0"	7.75"	5'	80 lf
1.0"	7.75"	5'	80 lf
0.4"	7.75"	5'	80 lf



Call 800-664-6638  
www.mortarnet.com