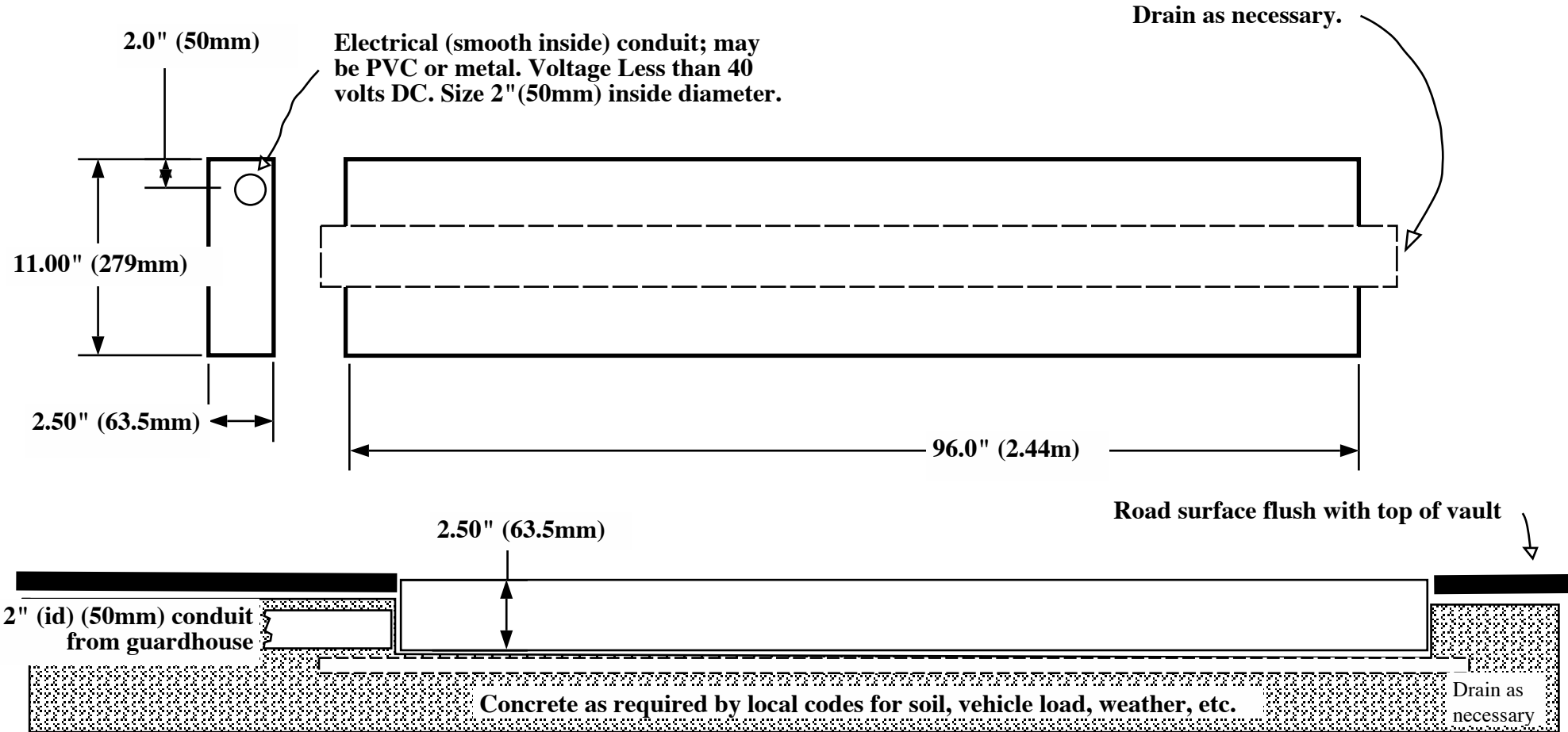


BG-400 trench (vault) requirements



Conduit run should be provided into the trench area from the guard house. Install one 2" (id) (50mm) electrical PVC pipe with less than 270 degrees of bend (or add access plate.)

The vault must be strong enough to withstand the weight of passing vehicles. At least 6" (152mm) concrete is recommended but local codes will dictate specifications. Drainage must be accommodated. New systems are rated to IP-68, but should not sustain standing water. If slope drainage is not sufficient, sumping may be necessary. Sufficient holes are provided within the Und-aware frames to adequately remove water from within the units.

NOTE: Drawing not to scale

Vehicle Inspection Technologies
22800 Executive Drive, Unit 100
Sterling, VA 20166-9522

Phone: 703-834-1064
fax: 703-834-0263
E-MAIL: sales@undaware.com

Drawing Name:
BG-400 vault specifications

Material & finish:
Concrete or other

Date:
11/01/05

Drawing No. & Rev.:
UND-BG400-vault