

Now every
Royal can be
a new Royal



Turning an existing Royal into the latest generation is as simple as a phone call to your local Sloan distributor. Sloan's Royal Performance Kit will turn any Royal Flushometer manufactured after 1964 into today's "no known equal" top performer.

Since 1906, Sloan Royal® Flushometers have proven themselves as the "no known equal" Flushometer. The fact is, Sloan has no equal in Quality, Reliability and Dependability—characteristics engineers look for in the products they specify.

This brochure contains a brief overview of why today's Royal belongs as your "no known equal" specification. Your local Sloan Sales Representative can demonstrate these advanced features in person, at your convenience.



Master Specification for Sloan Royal® Flushometers

Exposed Diaphragm Type, Chrome Plated Flushometer Valve. Low Consumption Valves will have Dual-Filtered type Diaphragm kit for flush discharge accuracy. Valve will be Non-Hold-Open and have no external volume adjustment. Valve will have A.D.A compliant handle with triple seal packing and skirted high back pressure vacuum breaker with bottom hex coupling nut. Bak-Chek® control stop will have free spinning vandal resistant cap and Sweat Solder Adapter kit with Cast Set Screw Wall Flange. Valve Body, Cover, Tailpiece and Control Stop will be in conformance with ASTM Alloy Classification for Semi-Red Brass. Valve will be in compliance with applicable sections of ASSE 1037, ANSI/ASME 112.19.6, and Military Specification V-29193 Standards.

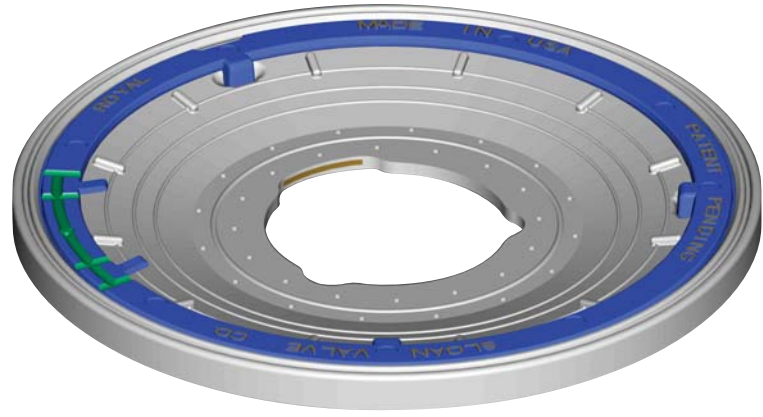
SLOAN®

Sloan Valve Company
10500 Seymour Avenue
Franklin Park, IL 60131
Phone: 800-9-VALVE-9
(800-982-5839) ext.5609
Fax: 800-447-8329
www.sloanvalve.com

0816434

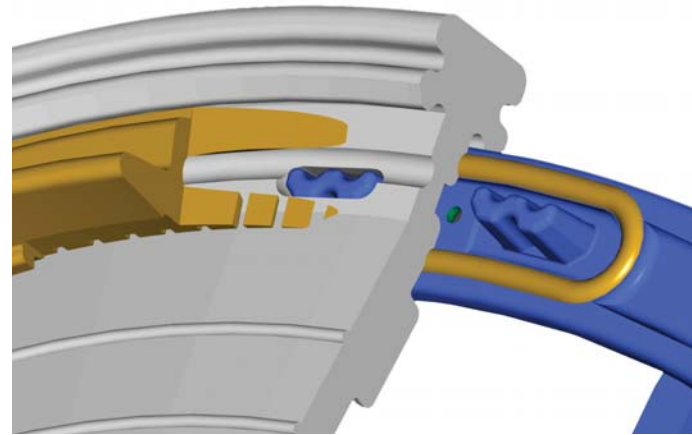
The Royal® Event

Reasons Why The Sloan
Royal Flushometer Has
"No Known Equal"



Dual-Filtered By-Pass

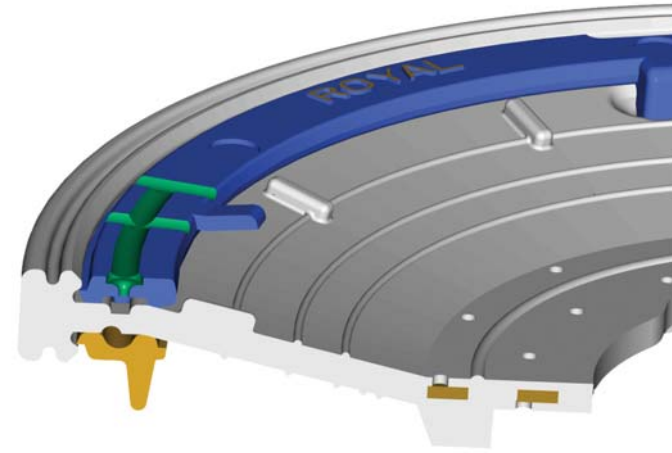
The Dual-Filtered By-Pass incorporates Permex® elastomeric material and controlled water delivery. These advanced design engineering features enable the Royal to successfully deal with harsh chemicals and debris found in today's water supplies.



“Twin Towers”

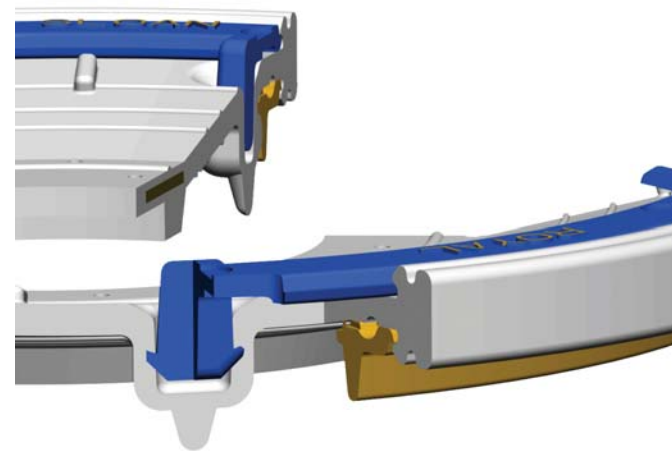
The Dual-Filtered By-Pass of the Royal Flushometer incorporates two filters.

- The large, primary filter cleans the water as it flows through it, entering the clean chamber
- In the chamber, the water passes through the “twin towers”—the second filter—before passing through the By-Pass
- These filters allow the Royal to deliver unmatched performance even in the worst operating conditions



Dual-Filtered By-Pass

The Dual-Filtered By-Pass of the Royal Flushometer is the result of Sloan advanced engineering. This, once again, raises the standard with the Royal's ability to effortlessly handle diverse and demanding water conditions.



Dual-Filtered By-Pass

- Dual sealing tips on the outer diameter
- A Primary Seal functions even under less than ideal water conditions



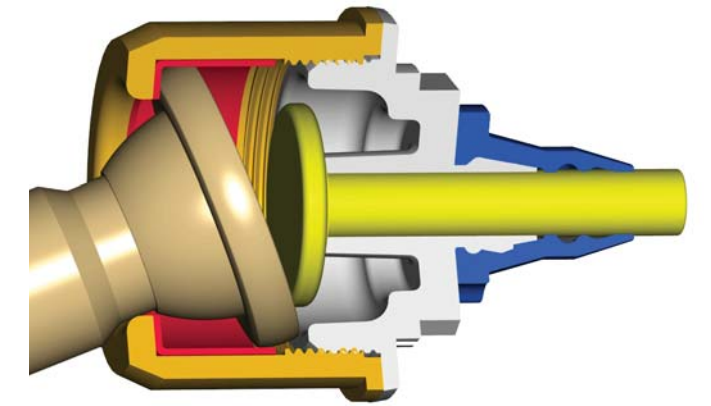
Refill Head

Sloan's Royal Flushometer Refill Head is designed to accurately control the flow profile and volume per flush.



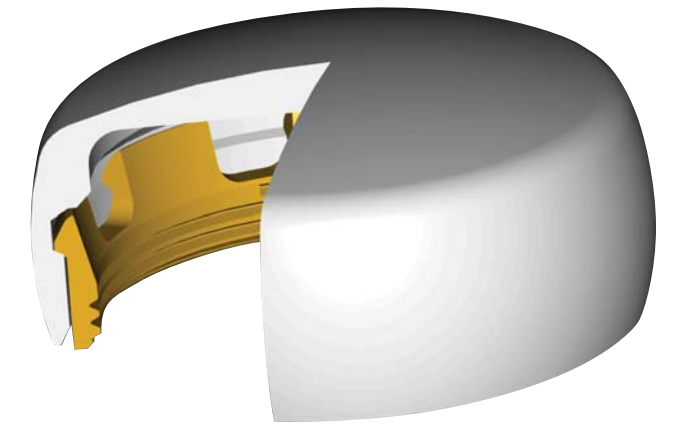
High Back Pressure Vacuum Breaker

The Vacuum Breaker prevents leakage due to high back pressure.



Triple Seal Handle

The Royal's Triple Seal Handle provides three distinct sealing points, assuring an extended life and additional protection within harsh water or installation environments.



Vandal-Resistant Stop Cap

The Royal Flushometer's Stop Cap incorporates a locking mechanism that discourages unauthorized removal, enhancing the Royal with a cleaner, more aesthetic appearance.